

# Catalogue 2008



...more than anchors

# plugs and building materials



Today various building materials are used, from full-building material like concrete or brick to aerated concrete and hollow bricks up to plasterboard. To ensure a safe attachment, Hufner produces a wide delivery program of different plugtypes for every kind of application.

Please take the information from the following table to choose the right kind of plug for your special demand.

concrete	lime stone	brick	hollow brick	aerated concrete	plasterboard	natural stone	polystyrene
article	product name			head	catalogue page	building material	
	Wall-plug "BEST", nylon and plastic				1		
	Wall-plug "BEST" with flange, nylon and plastic				2		
	Universal-plug "PLUS" without flange				3		
	Universal-plug "PLUS" with flange				3		
	Universal-plug "UNIVERS" without flange				4		
	Universal-plug "UNIVERS" with flange				4		
	Screwnail anchor countersunk "FIX", nylon				7		
	Screwnail anchor cylindrical head "FIX", nylon				7		
	Screwnail anchor countersunk "FIX COLOR", nylon				8		
	Screwnail anchor countersunk "FIX-S", nylon				9		
	Screwnail anchor "FIX big flange", nylon				9		
	Frame anchor "RKP" and "RLP", nylon				10		
	Frame anchor "RKT" and "RLT", nylon				11		
	Frame anchor "RKS" and "RLS", nylon				12		
	Window frame anchor countersunk "FRST" T 30				13		
	Window frame anchor countersunk "FRSP" POZI 3				13		
	Window frame anchor round head "FRLP" POZI 3				13		
	Window frame screw countersunk head "FRSS" T 30				14		
	Window frame screw cylindrical head "FRSZ" T 25				14		
	Window frame screw round head "FRSR" T 30				14		
	Spacer "LINE"				9		

concrete	lime stone	brick	hollow brick	aereated concrete	plasterboard	natural stone	polystyrene			
article		product name			head	catalogue page	building material			
	Eye-bolt "EYE"				15					
	Scaffolding-plug "WALL"				15					
	Scaffolding-plug "POWERDRIVE"				15					
	Cover-caps "CROSS" with cross lamellas, transp.				16					
	Cover-caps "RING" with round lamellas, transp.				16					
	Plasterboard plug "POWER"				5					
	Plasterboard plug "INTEGRAL"				5					
	Plasterboard metal plug "EASY"				5					
	Plasterboard metal plug "TOP"				5					
	Metal cavity anchor "MHDS"				6					
	Plier for cavity plugs				6					
	Universal metal anchor "UMD"				6					
	Express nail "FIX-ANKER"				17					
	Metal insulation anchor "MDH"				17					
	Metal insulation washer "MDS"				17					
	Insulation fixing "STAR"				18					
	Insulation fixing "ISOFIX"				18					
	Pipe clamp "KRALLE" one sided, nylon				19					
	Pipe clamp "KRALLE" double sided, nylon				19					
	Isolating tube clamp "HOOK"				20					
	Pipeclip "ZACK"				20					
	Nailstrip "ROLL"				21					
	Radiator air out tool "KEY" GFK				21					
	special packaging				22					

## Wall-plug "BEST" Nylon

Made in Germany



art.-no.	dimension Ø mm	drill Ø mm	screw Ø mm	packing unit	
				box	carton
10000	4	4	2,0 – 3,0	100	12.800
10000	5	5	2,5 – 4,0	100	12.800
10000	6	6	3,5 – 5,0	100	12.800
10000	7	7	4,0 – 5,5	100	6.400
10000	8	8	4,5 – 6,0	100	6.400
10000	10	10	6,0 – 8,0	50	3.200
10000	12	12	8,0 – 10,0	25	1.600
10000	14	14	10,0 – 12,0	20	1.280
10000	16	16	12,0 – 14,0	10	640

Wall-plug "BEST" made of pure Nylon for use in solid materials. The external tooth system highly raises the pull out results, internal bars assures the screws guidance. *(bulk on request)*

## Wall-plug "BEST" plastic

Made in Germany



art.-no.	dimension Ø mm	drill Ø mm	screw Ø mm	packing unit	
				box	carton
10100	4	4	2,0 – 3,0	100	12.800
10100	5	5	2,5 – 4,0	100	12.800
10100	6	6	3,5 – 5,0	100	12.800
10100	7	7	4,0 – 5,5	100	6.400
10100	8	8	4,5 – 6,0	100	6.400
10100	10	10	6,0 – 8,0	50	3.200
10100	12	12	8,0 – 10,0	25	1.600
10100	14	14	10,0 – 12,0	20	1.280

Wall-plug "BEST" made of high quality plastic for use in solid materials. The external tooth system highly raises the pull out results, internal bars assures the screws guidance. *(bulk on request)*

## Wall-plug "BEST" Nylon – with flange

Made in Germany



art.-no.	dimension Ø mm	drill Ø mm	screw Ø mm	packing unit	
				box	carton
10050	5	5	2,5 – 4,0	100	12.800
10050	6	6	3,5 – 5,0	100	12.800
10050	8	8	4,5 – 6,0	100	6.400
10050	10	10	6,0 – 8,0	50	3.200
10050	12	12	8,0 – 10,0	25	1.600
10050	14	14	10,0 – 12,0	20	1.280

Wall-plug "BEST" made of pure Nylon for use in solid materials. The plug is constructed with a flange to keep its position save and to avoid slipping into the drilled hole. The external tooth system highly raises the pull out results, internal bars assures the screws guidance. *(bulk on request)*

## Wall-plug "BEST" plastic – with flange

Made in Germany



art.-no.	dimension Ø mm	drill Ø mm	screw Ø mm	packing unit	
				box	carton
10150	5	5	2,5 – 4,0	100	12.800
10150	6	6	3,5 – 5,0	100	12.800
10150	8	8	4,5 – 6,0	100	6.400
10150	10	10	6,0 – 8,0	50	3.200
10150	12	12	8,0 – 10,0	25	1.600
10150	14	14	10,0 – 12,0	20	1.280

Wall-plug "BEST" made of high quality plastic for use in solid materials. The plug is constructed with a flange to keep its position save and to avoid slipping into the drilled hole. The external tooth system highly raises the pull out results, internal bars assures the screws guidance. *(bulk on request)*

## Universal-plug "PLUS" without flange

Made in Germany



art.-no.	dimension Ø mm	drill Ø mm	screw Ø mm	packing unit	
				box	carton
10200	6	6	3,5 – 5,0	100	6.400
10200	8	8	4,5 – 6,0	100	4.000
10200	10	10	6,0 – 8,0	50	2.000

Universal-plug "PLUS" is a multi purpose plug made of high quality plastic for use as well in solid material when the plug spreads in four directions as also for use in cavity materials when the plug forms a knot around the screw.  
(bulk on request)

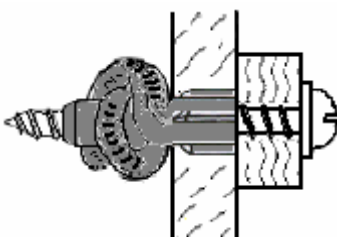
## Universal-plug "PLUS" with flange

Made in Germany



art.-no.	dimension Ø mm	drill Ø mm	screw Ø mm	packing unit	
				box	carton
10250	6	6	3,5 – 5,0	100	6.400
10250	8	8	4,5 – 6,0	100	4.000
10250	10	10	6,0 – 8,0	50	2.000

Universal-plug "PLUS" is a multi purpose plug made of high quality plastic for use as well in solid material when the plug spreads in four directions as also for use in cavity materials when the plug forms a knot around the screw. It is constructed with a flange to keep the position save and to avoid slipping into the drilled hole.  
(bulk on request)



## Universal-plug "UNIVERS" without flange

Made in Germany



art.-no.	dimension Ø mm	drill Ø mm	screw Ø mm	packing unit	
				box	carton
10300	5	5	2,5 – 4,0	100	12.800
10300	6	6	3,5 – 5,0	100	6.400
10300	8	8	4,5 – 6,0	100	4.000
10300	10	10	6,0 – 8,0	50	2.000
10300	12	12	8,0 – 10,0	25	1.600
10300	14	14	10,0 – 12,0	20	1.280

Universal-plug "UNIVERS" of high quality plastic for the use in solid material (the plug spreads in three directions) and for the use in cavity material (the plug forms a knot around the screw). Available in red and grey color. *(bulk on request)*

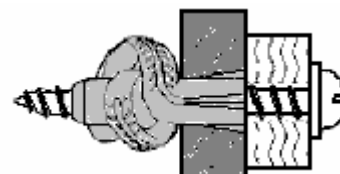
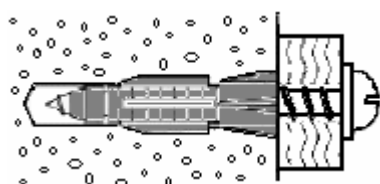
## Universal-plug "UNIVERS" with flange

Made in Germany



art.-no.	dimension Ø mm	drill Ø mm	screw Ø mm	packing unit	
				box	carton
10350	5	5	2,5 – 4,0	100	12.800
10350	6	6	3,5 – 5,0	100	6.400
10350	8	8	4,5 – 6,0	100	4.000
10350	10	10	6,0 – 8,0	50	2.000
10350	12	12	8,0 – 10,0	25	1.600
10350	14	14	10,0 – 12,0	20	1.280

Universal-plug "UNIVERS" of high quality plastic for the use in solid material (the plug spreads in three directions) and for the use in cavity material (the plug forms a knot around the screw). The plug is constructed with a flange to keep its position save and to avoid slipping into the drill hole. Available in red and grey color. *(bulk on request)*



## plasterboard plug "POWER"



art.-no.	drill Ø mm	screw Ø mm	packing unit	
			box	carton
12000	10	4,0 x 50 + length of fix. object	25	1.600

The plasterboard plug "POWER" of ductile elastic plastic combines fast handling with extremely high capacity by its broad wide protruding arms. The thinner the material, the arms will open wider. Two internal stabiliser increases the holding force.

## plasterboard plug "INTEGRAL"

Made in Germany



art.-no.	screw Ø mm	packing unit	
		box	carton
12100	3,5 – 6,0	200	2.000

With its integrated drill-bit there is no need for special setting tools anymore. A cross recess screwdriver or screwdriver-bit will be suitable. The plug is made out of special glass fibre strengthened material (non electro conductive). The maximum insert depth of 30 mm allows this plug to be used even in plasterboards which has been glued directly on the wall. Suitable for many screw diameters:

Drywall-screws 3,6 - 4,8 mm Ø

Chipboard-screws 3,5 - 6,0 mm Ø

Wood-screws 3,5 - 5,0 mm Ø

„INTEGRAL“ can be used in hard plasterboards (i.e. Fermacell) as well as in gas-aerated concrete. Drill a hole with a diameter of 6 mm - screw in the plug - finished.

## plasterboard metal plug "EASY"



art.-no.	screw Ø mm	packing unit	
		box	carton
24000	4,0 – 4,5	100	1.000

With its integrated drill-bit there is no need for special setting tools anymore. A cross recess screwdriver or screwdriver-bit will be suitable. The metal plug „EASY“ can be used in hard plasterboards (i.e. Fermacell) as well as in gas-aerated concrete. Screw in the plug with some ordinary cross-recess screwdriver - finished.

## plasterboard metal plug "TOP"

Made in Germany



art.-no.	screw Ø mm	packing unit	
		box	carton
24050	4,0 – 4,5	200	2.000

With its integrated drill-bit there is no need for special setting tools anymore. A cross recess screwdriver or screwdriver-bit will be suitable. The metal plug „TOP“ can be used in hard plasterboards (i.e. Fermacell) as well as in gas-aerated concrete. Screw in the plug with some ordinary cross-recess screwdriver - finished.



## Metal cavity anchor "MHDS"



art.-no.	dimension Ø x L mm	clamping range max. mm	drill Ø mm	screw mm	packing unit	
					box	carton
24100	4 x 6	6	9	4	100	1.000
24100	4 x 12	12	9	4	100	1.000
24100	4 x 24	24	9	4	100	1.000
24100	4 x 38	38	9	4	100	1.000
24100	5 x 12	12	11	5	100	1.000
24100	5 x 16	16	11	5	100	1.000
24100	5 x 24	24	11	5	100	1.000
24100	5 x 38	38	11	5	100	1.000
24100	6 x 12	12	13	6	100	1.000
24100	6 x 16	16	13	6	100	1.000
24100	6 x 24	24	13	6	100	1.000
24100	6 x 38	38	13	6	100	1.000

Metal cavity anchor "MHDS" with pre-assembled screw for the fast fixing of plasterboards.  
For processing we recommend the plier for cavity plugs as below.

## Pliers for cavity plugs



art.-no.	usable	packing unit
31500	for art.-no. 24100	1

Lead the Metal cavity anchor with the pliers in the borehole and spread. By tighten the screw the pliers spreads the plug.

## Universal metal anchor "UMD"



art.-no.	dimension Ø x L mm	drill Ø mm	screw Ø mm	packing unit	
				box	carton
24600	5 x 30	5 - 6	4,0 - 5,0	200	2.000
24600	6 x 32	7 - 8	5,0 - 6,0	200	2.000
24600	8 x 38	9 - 11	6,0 - 8,0	100	2.000
24600	8 x 60	9 - 11	6,0 - 8,0	100	2.000
24600	10 x 60	12 - 14	8,0 - 10,0	100	2.000

Universal metal anchor "UMD" for universal using both in hollow bricks and in concrete and aerated concrete. It's easy to hit the anchor in aerated concrete – in aerated concrete class 6 and for other harder materials it recommends a pre-drill. The anchor has an internal screw guidance for a safe stop of the thread. The outer corrugation guarantees high pull-out results in nearly all building materials.

## Screwnail anchor countersunk "FIX" Nylon

Made in Germany



art.-no.	dimension Ø x L mm	drill Ø mm	usable length mm	packing unit	
				box	carton
11000	5 x 30	5	10	200	2.000
11000	5 x 35	5	15	200	2.000
11000	5 x 40	5	20	200	2.000
11000	5 x 50	5	30	200	2.000
11000	5 x 60	5	40	200	2.000
11000	6 x 30	6	5	200	2.000
11000	6 x 35	6	10	200	2.000
11000	6 x 40	6	15	200	2.000
11000	6 x 50	6	25	200	2.000
11000	6 x 60	6	35	200	2.000
11000	6 x 80	6	45	200	2.000
11000	8 x 50	8	10	100	1.000
11000	8 x 60	8	20	100	1.000
11000	8 x 80	8	40	100	1.000
11000	8 x 100	8	60	100	1.000
11000	8 x 120	8	80	100	1.000
11000	8 x 140	8	100	100	1.000
11000	8 x 160	8	120	50	500

Screwnail anchor "FIX" of pure Nylon with zinc plated nailscrew. Fast assembling in solid materials. Subsequent adjustable by the pozidrive head. The plug countersinks completely in wood-substructure.

## Screwnail anchor cylindrical head "FIX" Nylon

Made in Germany



art.-no.	dimension Ø x L mm	drill Ø mm	usable length mm	packing unit	
				box	carton
11050	5 x 30	5	10	200	2.000
11050	5 x 35	5	15	200	2.000
11050	5 x 40	5	20	200	2.000
11050	5 x 50	5	30	200	2.000
11050	5 x 60	5	40	200	2.000
11050	6 x 30	6	5	200	2.000
11050	6 x 35	6	10	200	2.000
11050	6 x 40	6	15	200	2.000
11050	6 x 50	6	25	200	2.000
11050	6 x 60	6	35	200	2.000
11050	6 x 80	6	45	200	2.000
11050	8 x 50	8	10	100	1.000
11050	8 x 60	8	20	100	1.000
11050	8 x 80	8	40	100	1.000
11050	8 x 100	8	60	100	1.000
11050	8 x 120	8	80	100	1.000

Screwnail anchor "FIX" of pure nylon with zinc plated nailscrew. Fast assembling in solid materials. Subsequent adjustable by the pozidrive head. The head of the plug does act like a washer. Important for the usage on thin material like markers, steel plates, metal-frameworks in interior works, conduit etc.

# Screwnail anchor countersunk "FIX COLOR" Nylon

Made in Germany

with colored nailscrew - **brass plated**



art.-no.	dimension Ø x L mm	drill Ø mm	usable length mm	packing unit	
				box	carton
11100	5 x 30	5	10	200	2.000
11100	5 x 40	5	20	200	2.000
11100	5 x 50	5	30	200	2.000
11100	5 x 60	5	40	200	2.000

with colored nailscrew - **white**



art.-no.	dimension Ø x L mm	drill Ø mm	usable length mm	packing unit	
				box	carton
11120	5 x 30	5	10	200	2.000
11120	5 x 40	5	20	200	2.000
11120	5 x 50	5	30	200	2.000
11120	5 x 60	5	40	200	2.000

with colored nailscrew - **grey**



art.-no.	dimension Ø x L mm	drill Ø mm	usable length mm	packing unit	
				box	carton
11140	5 x 30	5	10	200	2.000
11140	5 x 40	5	20	200	2.000
11140	5 x 50	5	30	200	2.000
11140	5 x 60	5	40	200	2.000

with colored nailscrew - **brown**



art.-no.	dimension Ø x L mm	drill Ø mm	usable length mm	packing unit	
				box	carton
11160	5 x 30	5	10	200	2.000
11160	5 x 40	5	20	200	2.000
11160	5 x 50	5	30	200	2.000
11160	5 x 60	5	40	200	2.000

Screwnail anchor "FIX COLOR" of pure Nylon with colored nailscrew. Fast assembling of wood, shields, ledges and many objects, where a visible fastening is necessary. Adjustable by the pozidrive head.

## Screwnail anchor "FIX-S" Nylon with washer

Made in Germany



art.-no.	dimension Ø x L mm	drill Ø mm	usable length mm	packing unit	
				box	carton
11070	6 x 35	6	10	100	1.000
11070	6 x 40	6	15	100	1.000
11070	6 x 50	6	25	100	1.000
11070	6 x 60	6	35	100	1.000
11070	6 x 80	6	45	100	1.000
11070	8 x 50	8	10	100	1.000

Screwnail anchor "FIX-S" of pure Nylon with countersunk head, zinc plated nailscrew and zinc plated washer. Fast assembling in solid materials. Subsequent adjustable by the pozidrive head. Sure fastening of metal sheets and other objects.

## Screwnail anchor cylindrical head "FIX big flange" Nylon

Made in Germany



art.-no.	dimension Ø x L mm	drill Ø mm	usable length mm	packing unit	
				box	carton
11060	8 x 45	8	10	100	1.000

Screwnail anchor "FIX big flange" of pure Nylon with zinc plated nailscrew. Fast assembling in solid materials. Subsequent adjustable by the pozidrive head. The head of the plug does act like a washer and makes it easy to fasten profiles with big perforations. Not pre-assembled.

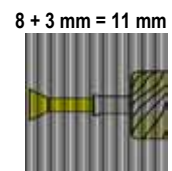
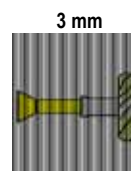
## Spacer "LINE"

Made in Germany



art.-no.	thickness mm	color	packing unit	
			box	carton
11600	3	Red	100	4.500
11600	5	Yellow	100	3.000
11600	8	Blue	100	2.000
11600	10	Black	100	1.500
11600	15	White	100	1.000

Accurate adaptation for use on high-grade uneven surface. Various potentialities by using two or even more spacers. Strong halt by clamping the screw or plug to the spacer already at the assembling.



## Frame anchor Nylon "RKP" with pozidrive screw, zinc plated

Made in Germany



art.-no.	dimension Ø x L mm	drill Ø mm	usable length mm	packing unit	
				box	carton
11200	10 x 80	10	25	50	500
11200	10 x 100	10	55	50	500
11200	10 x 120	10	75	50	500
11200	10 x 140	10	95	50	500
11200	10 x 160	10	115	50	500

Frame anchor "RKP" from pure Nylon with zinc plated pozidrive screw. Fast fixing in solid materials like bricks, natural stone, concrete and lime stone.

## Frame anchor Nylon – long expansion "RLP" with pozidrive screw, zinc plated

Made in Germany



art.-no.	dimension Ø x L mm	drill Ø mm	usable length mm	packing unit	
				box	carton
11250	10 x 100	10	55	50	500
11250	10 x 120	10	75	50	500
11250	10 x 140	10	95	50	500
11250	10 x 160	10	115	50	500

Frame anchor "RLP" with long expansion from pure Nylon with zinc plated pozidrive screw. Fast fixing in **non** solid materials like lightweight materials and hollow bricks.

## Frame anchor Nylon "RKPF" with pozidrive screw, *hot galvanized*

Made in Germany



art.-no.	dimension Ø x L mm	drill Ø mm	usable length mm	packing unit	
				box	carton
11205	10 x 80	10	25	50	500
11205	10 x 100	10	55	50	500
11205	10 x 120	10	75	50	500
11205	10 x 140	10	95	50	500
11205	10 x 160	10	115	50	500

Frame anchor "RKPF" from pure Nylon with *hot galvanized* pozidrive screw. Fast Fixing in solid material like bricks, natural stone, concrete and lime stone.

## Frame anchor Nylon – long expansion "RLPF" with pozidrive screw, *hot galvanized*

Made in Germany



art.-no.	dimension Ø x L mm	drill Ø mm	usable length mm	packing unit	
				box	carton
11255	10 x 100	10	55	50	500
11255	10 x 120	10	75	50	500
11255	10 x 140	10	95	50	500
11255	10 x 160	10	115	50	500

Frame anchor "RLPF" with long expansion from pure Nylon with *hot galvanized* pozidrive screw. Fast fixing in **non** solid materials like lightweight materials and hollow bricks.

## Frame anchor Nylon "RKT" with inner star screw, zinc plated

Made in Germany



art.-no.	dimension Ø x L mm	drill Ø mm	usable length mm	packing unit	
				box	carton
11210	10 x 80	10	25	50	500
11210	10 x 100	10	55	50	500
11210	10 x 120	10	75	50	500
11210	10 x 140	10	95	50	500
11210	10 x 160	10	115	50	500

Frame anchor "RKT" from pure Nylon with zinc plated inner star screw. Fast Fixing in solid material like bricks, natural stone, concrete and lime stone.

## Frame anchor Nylon – long expansion "RLT" with inner star screw, zinc plated

Made in Germany



art.-no.	dimension Ø x L mm	drill Ø mm	usable length mm	packing unit	
				box	carton
11260	10 x 100	10	55	50	500
11260	10 x 120	10	75	50	500
11260	10 x 140	10	95	50	500
11260	10 x 160	10	115	50	500

Frame anchor "RLT" with long expansion from pure Nylon with zinc plated inner star screw. Fast fixing in **non** solid materials like lightweight materials and hollow bricks.

## Frame anchor Nylon "RKTF" with inner star screw, *hot galvanized*

Made in Germany



art.-no.	dimension Ø x L mm	drill Ø mm	usable length mm	packing unit	
				box	carton
11215	10 x 80	10	25	50	500
11215	10 x 100	10	55	50	500
11215	10 x 120	10	75	50	500
11215	10 x 140	10	95	50	500
11215	10 x 160	10	115	50	500

Frame anchor "RKT" from pure Nylon with *hot galvanized* inner star screw. Fast Fixing in solid material like bricks, natural stone, concrete and lime stone.

## Frame anchor Nylon – long expansion "RLTF" with inner star screw, *hot galvanized*

Made in Germany



art.-no.	dimension Ø x L mm	drill Ø mm	usable length mm	packing unit	
				box	carton
11265	10 x 100	10	55	50	500
11265	10 x 120	10	75	50	500
11265	10 x 140	10	95	50	500
11265	10 x 160	10	115	50	500

Frame anchor "RLT" with long expansion from pure Nylon with *hot galvanized* inner star screw. Fast fixing in **non** solid materials like lightweight materials and hollow bricks.

## Frame anchor Nylon "RKS" with hexagon screw, zinc plated

Made in Germany



art.-no.	dimension Ø x L mm	drill Ø mm	usable length mm	packing unit	
				box	carton
11220	10 x 80	10	25	50	500
11220	10 x 100	10	55	50	500
11220	10 x 120	10	75	50	500
11220	10 x 140	10	95	50	500
11220	10 x 160	10	115	50	500

Frame anchor "RKS" from pure Nylon with zinc plated hexagon screw. Fast Fixing in solid material like bricks, natural stone, concrete and lime stone.

## Frame anchor Nylon – long expansion "RLS" with hexagon screw, zinc plated

Made in Germany



art.-no.	dimension Ø x L mm	drill Ø mm	usable length mm	packing unit	
				box	carton
11270	10 x 100	10	55	50	500
11270	10 x 120	10	75	50	500
11270	10 x 140	10	95	50	500
11270	10 x 160	10	115	50	500

Frame anchor "RLS" with long expansion from pure Nylon with zinc plated hexagon screw. Fast fixing in **non** solid materials like lightweight materials and hollow bricks.

## Frame anchor Nylon "RKSF" with hexagon screw, *hot galvanized*

Made in Germany



art.-no.	dimension Ø x L mm	drill Ø mm	usable length mm	packing unit	
				box	carton
11225	10 x 80	10	25	50	500
11225	10 x 100	10	55	50	500
11225	10 x 120	10	75	50	500
11225	10 x 140	10	95	50	500
11225	10 x 160	10	115	50	500

Frame anchor "RKSF" from pure Nylon with *hot galvanized* hexagon screw. Fast Fixing in solid material like bricks, natural stone, concrete and lime stone.

## Frame anchor Nylon – long expansion "RLSF" with hexagon screw, *hot galvanized*

Made in Germany



art.-no.	dimension Ø x L mm	drill Ø mm	usable length mm	packing unit	
				box	carton
11275	10 x 100	10	55	50	500
11275	10 x 120	10	75	50	500
11275	10 x 140	10	95	50	500
11275	10 x 160	10	115	50	500

Fram anchor "RLSF" with long expansion from pure Nylon with *hot galvanized* hexagon screw. Fast fixing in **non** solid materials like lightweight materials and hollow bricks.

## Metal Window-Frame-Anchor "FRST"



art.-no.	dimension Ø x L mm	drill Ø mm	usable length mm	packing unit
23600	10 x 72	10	20	100
23600	10 x 92	10	40	100
23600	10 x 112	10	60	100
23600	10 x 132	10	80	100
23600	10 x 152	10	100	100
23600	10 x 182	10	120	100
23600	10 x 202	10	140	100

Metal Window-Frame-Anchor "FRST" is a zinc plated metal plug, with a zinc plated cone and a zinc plated inner hexagonal countersunk-screw for use with bits T-30. It ensures an assembly without tension in high-density materials.

## Metal Window-Frame-Anchor "FRSP"



art.-no.	dimension Ø x L mm	drill Ø mm	usable length mm	packing unit
23625	10 x 72	10	20	100
23625	10 x 92	10	40	100
23625	10 x 112	10	60	100
23625	10 x 132	10	80	100
23625	10 x 152	10	100	100
23625	10 x 182	10	120	100
23625	10 x 202	10	140	100

Metal Window-Frame-Anchor "FRSP" is a zinc plated metal plug, with a zinc plated cone and a zinc plated pozidrive countersunk-screw for use with bits pozi 3. It ensures an assembly without tension in high-density materials.

## Metal Window-Frame-Anchor "FRLP"



art.-no.	dimension Ø x L mm	drill Ø mm	usable length mm	packing unit
23650	10 x 72	10	20	100
23650	10 x 92	10	40	100
23650	10 x 112	10	60	100
23650	10 x 132	10	80	100
23650	10 x 152	10	100	100
23650	10 x 182	10	120	100
23650	10 x 202	10	140	100

Metal Window-Frame-Anchor "FRLP" is a zinc plated metal plug, with a zinc plated cone and a zinc plated pozidrive round head-screw for use with bits pozi 3. It ensures an assembly without tension in high-density materials.



## Window-Frame-Screw "FRSS"



art.-no.	dimension Ø x L mm	drill Ø mm	head Ø mm	packing unit
23700	7,5 x 72	6	11	100
23700	7,5 x 92	6	11	100
23700	7,5 x 112	6	11	100
23700	7,5 x 132	6	11	100
23700	7,5 x 152	6	11	100
23700	7,5 x 182	6	11	100
23700	7,5 x 212	6	11	100

Window-Frame-Screw „FRSS“ is a zinc plated inner star countersunk head-screw for use with bits T-30. To fasten window- or door frames in high-density materials. During screwing in, the thread cuts into the building material.

## Window-Frame-Screw "FRSZ"



art.-no.	dimension Ø x L mm	drill Ø mm	head Ø mm	packing unit
23725	7,5 x 72	6	11	100
23725	7,5 x 92	6	11	100
23725	7,5 x 112	6	11	100
23725	7,5 x 132	6	11	100
23725	7,5 x 152	6	11	100
23725	7,5 x 182	6	11	100
23725	7,5 x 212	6	11	100

Window-Frame-Screw „FRSZ“ is a zinc plated inner star cylindrical head-screw for use with bits T-25. To fasten window- or door frames in high-density materials. During screwing in, the thread cuts into the building material.

## Window-Frame-Screw "FRSR"



art.-no.	dimension Ø x L mm	drill Ø mm	head mm	packing unit
23750	7,5 x 72	6	11	100
23750	7,5 x 92	6	11	100
23750	7,5 x 112	6	11	100
23750	7,5 x 132	6	11	100
23750	7,5 x 152	6	11	100
23750	7,5 x 182	6	11	100
23750	7,5 x 212	6	11	100

Window-Frame-Screw „FRSR“ is a zinc plated inner star round head-screw for use with bits T-30. To fasten window- or door frames in high-density materials. During screwing in, the thread cuts into the building material.

## Eye-bolt "EYE"

Made in Germany



art.-no.	shaft Ø mm	screw / shaft length mm	eye internal Ø mm	packing unit box
20000	12	90	23	150
20000	12	120	23	100
20000	12	160	23	100
20000	12	190	23	100
20000	12	230	23	100
20000	12	300	23	50
20000	12	350	23	25

Eye-bolt "EYE", zinc plated steel, with welded eye. A simplified insertion of the eye-bolt is guaranteed by screw-in markings. Suitable for these eye-bolts find the scaffolding-plug "WALL" below.

## Scaffolding-plug "WALL"

Made in Germany



art.-no.	dimension Ø x L mm	drill Ø mm	screw Ø mm	packing unit box / carton
10450	14 x 70	14	10 – 12	25 / 250
10450	14 x 100	14	10 – 12	25 / 250
10450	14 x 135	14	10 – 12	25 / 250
10450	14 x 185	14	10 – 12	25 / 250

Long-shank plug "WALL" made out of Nylon, for combined usage with **Hüfner** eye-bolts "EYE" and **Hüfner** Cover-caps "RING" or "CROSS".

## Scaffolding-plug "POWERDRIVE"

Made in Germany



art.-no.	dimension Ø x L mm	drill Ø mm	screw Ø mm	packing unit box / carton
10400	14 x 70	14	10 – 12	25 / 800

Wall-plug "POWERDRIVE" made out of Nylon, especially for the combined usage with **Hüfner** eye-bolts "EYE" and **Hüfner** Cover-caps "RING" or "CROSS".

A special thread guidance reduces the turn in power of the eye-bolt up to 35 %, the second thread guidance at the bottom of the plug avoids stretch forming of the plug and raises the overall pull-out results. (e. g. brick MZ12/20 = 21,5 Kn)

## Cover-caps "CROSS" with cross lamellas

### transparent

Made in Germany



art.-no.	dimension		for plugs Ø mm	packing unit	
	head Ø mm	length mm		box	carton
10500	28	40	12 und 14	100	2.000
10500	28	80	12 und 14	100	2.000

The caps will cover the holes after the scaffold has been removed. Universal usage, high performance in application with all **Hüfner** scaffolding-plugs. Made out of high quality plastic the caps will easily be painted.

Following colors are available on request: *brown, grey and black.*

## Cover-caps "RING" with round lamellas

### transparent

Made in Germany



art.-no.	dimension		for plugs Ø mm	packing unit	
	head Ø mm	length mm		box	carton
10600	28	40	12 und 14	100	2.000
10600	28	80	12 und 14	100	2.000

The caps will cover the holes after the scaffold has been removed. Universal usage, high performance in application with all **Hüfner** scaffolding-plugs. Made out of high quality plastic the caps will easily be painted.

Following colors are available on request: *brown, grey and black.*

## Flared-Flange-Pin "FIX-ANKER"

Made in Germany



art.-no.	dimension mm	drill Ø mm	packing unit	
			box	carton
29000	6 x 30	6	200	2.000
29000	6 x 40	6	200	2.000
29000	6 x 50	6	200	2.000
29000	6 x 60	6	200	2.000
29000	6 x 80	6	200	2.000
29000	6 x 100	6	200	2.000
29000	8 x 70	8	100	1.000
29000	8 x 90	8	100	1.000
29000	8 x 110	8	100	1.000
29000	8 x 130	8	100	1.000
29000	8 x 150	8	100	1.000
29000	8 x 180	8	100	1.000

Easy application with immediate resilience, drill + drive in = ready. Pull-out results exceeding 4 KN. For use in concrete, solid brick, solid lime-sand brick and compression proof natural stone. Well engineered: the speed nails are free of projecting interlocks, so that it is impossible for them to get caught up in the box. Increased bearing area by the big head – easy setting by ring lamellas and conical tip. Tempered spring steel – non-flammable – zinc plated and blue passivated.

## Metal-Insulation-Washer "MDS"

Made in Germany



art.-no.	in / out Ø mm	packing unit	
		box	carton
29100	9 x 70	100	1.000

The outer diameter of the zinc plated metal washer is 70 mm the inner diameter is 9 mm, so it fits to the use of „FIX-ANKER“ and „FIX“ screw nail anker diameter 8 mm.

## Metal-Insulation-Plug "ISO-ANKER"

Made in Germany

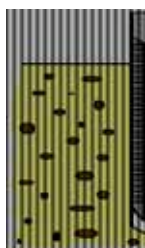


art.-no.	dimension mm	drill Ø mm	packing unit	
			box	carton
29200	8 x 70	8	100	1.000
29200	8 x 90	8	100	1.000
29200	8 x 110	8	100	1.000
29200	8 x 130	8	100	1.000
29200	8 x 150	8	100	1.000
29200	8 x 180	8	100	1.000

Metal-Insulation-Plug "ISO-ANKER" consists of two parts: Flared-Flange-Pin "FIX-ANKER" and a washer, Ø 70 mm, zinc plated, not pre-assembled.

## Pipe-clamp "KRALLE" one sided, Nylon

Made in Germany

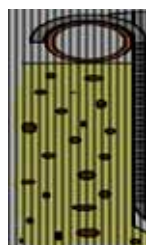


art.-no.	dimension mm	drill Ø mm	pipe Ø mm	packing unit	
				box	carton
15000	6 x 70	6	5 – 25	100	8.000
15000	8 x 75	8	25 – 35	100	3.500
15000	8 x 95	8	25 – 35	100	3.000
15000	8 x 110	8	35 – 45	100	2.000

Pipe-clamp „KRALLE“, the save and economic fixing of tubes and different kind of cables in solid materials.  
Easy application for time-saving handling: drill a hole – hammer in the pipe-clamp – finished.

## Pipe-clamp "KRALLE" double sided, Nylon

Made in Germany



art.-no.	dimension mm	drill Ø mm	pipe Ø mm	packing unit	
				box	carton
15100	6 x 70	6	5 – 25	100	5.000
15100	8 x 75	8	25 – 35	100	2.000
15100	8 x 95	8	25 – 35	100	1.800

Pipe-clamp „KRALLE“, the save and economic fixing of tubes and different kind of cables in solid materials.  
Easy application for time-saving handling: drill a hole – hammer in the pipe-clamp – finished.

## Insulation fixing "STAR"

Made in Germany



art.-no.	dimension		drill Ø mm	material thickness mm	packing unit carton
	shaft Ø x L mm	head Ø mm			
17000	8 x 60	90	8	20 – 40	250
17000	8 x 80	90	8	40 – 60	250
17000	8 x 100	90	8	60 – 80	250
17000	8 x 120	90	8	80 – 100	250
17000	8 x 140	90	8	100 – 120	200

Insulation fixing „STAR“ is an economic fixing for soft mineral fibre-materials on walls of concrete, bricks and sand-lime bricks. High-quality plastic guarantees stable and secure support. Easy handling and the small installation depth of minimum 2 cm will proof a time-saving processing: drill a hole – drive in the insulation fixing – finished.

## Insulation fixing "ISOFIX"

Made in Germany



art.-no.	dimension		drill Ø mm	material thickness mm	packing unit carton
	shaft Ø x L mm	head Ø mm			
17450	10 x 70	50	10	20 – 40	250
17450	10 x 90	50	10	40 – 60	250
17450	10 x 110	50	10	60 – 80	250
17450	10 x 130	50	10	80 – 100	250
17450	10 x 150	50	10	100 – 120	250
17450	10 x 180	50	10	130 – 150	250

Insulation fixing „ISOFIX“ is an economic fixing for upgraded insulation systems and other hard insulating material on walls of concrete, bricks and sand-lime bricks. High-quality plastic guarantees stable and secure support. As the spreading nail is also made out of this special kind of plastic the thermal conductivity will be reduced to its minimum and corrosion will be prevented. Easy handling will proof a time-saving processing: drill a hole – drive in the insulation fixing – finished.

## Isolating tube clamp "HOOK"

Made in Germany



Art.-Nr.	Stückzahl	
	Kleinkarton	Umkarton
15200	100	2.000

## Pipe clip "ZACK"

Made in Germany



art.-no.	dimension Ø mm	pipe Ø mm	packing unit	
			box	carton
15300	13	10 - 13	100	2.000

Rohrclip "ZACK" aus hitzebeständigem, Glasfaser verstärktem Nylon für eine sichere und schnelle Befestigung von Fußbodenheizungsrohren auf Styroporuntergrund.

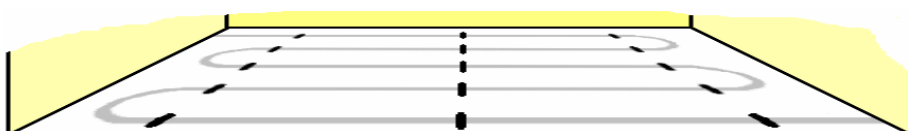
## Pipe clip "ZACK" on stripes

Made in Germany



art.-no.	dimension Ø mm	pipe Ø mm	packing unit	
			string	carton
15350	13	10 - 13	50	1.500

Rohrclip "ZACK" aus hitzebeständigem, Glasfaser verstärktem Nylon für eine sichere und schnelle Befestigung von Fußbodenheizungsrohren auf Styroporuntergrund. Aufgereiht, speziell zur optimalen Verarbeitung mit Magazin – Setzgeräten.



## Nail strip "ROLL"

Made in Germany



art.-no.	width mm	length m	packing unit carton
16000	15	15	10

Nail strip „ROLL“ is a high-strength fabric-tape made out of Polyester for the fast and save fixing of pipes, lines and electrical wire. Easy use with steel nails and cartridge nailers. In face of its extreme high tensile strength the Nail strip „ROLL“ is much more flexible than metal perforated tapes and reduces the vibrations to its minimum. Without any risk of corrosion and a temperature resistance up to 100° C it is quite useful for the application of laying heater systems. The practical dispenser is ideal for professional users.

## Radiator air out tool "KEY" GFK

Made in Germany



art.-no.	box	packing unit / carton
31000	100	1.000

This radiator aerating tool „KEY“ - made out of GFK material - is an economic alternative tool for air out radiator heating systems.